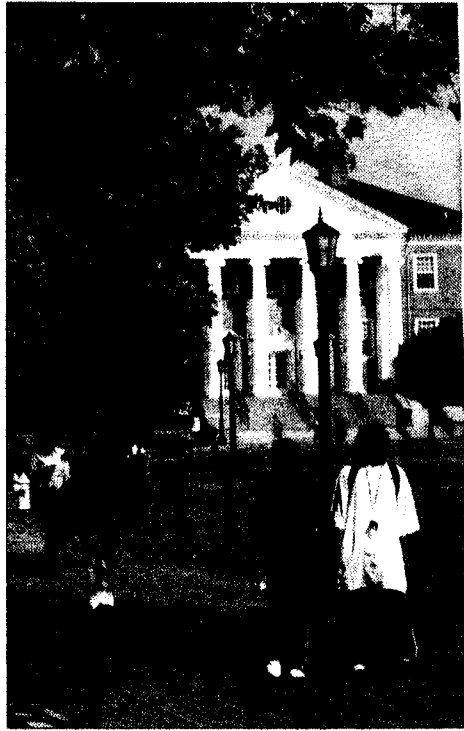


# UMES undergoes transformation

PRINCESS ANNE



One of the nation's most picturesque campuses, the University of Maryland Eastern Shore is transforming itself under the leadership of its president, Dr. Thelma Thompson, and through its three-tiered mission—an 1890 land-grant, historically black and comprehensive doctoral degree granting university—into a prominent place in the public higher education landscape.

Founded in 1886 and home to some 3,300 undergraduate and 450 graduate students, UMES emphasizes the arts and sciences, agriculture, business and teacher education. True to its land-grant heritage, it offers a number of programs geared to the needs of the region, including aviation science, construction management, and hotel and restaurant management.

Pre-professional training is available in eight distinct fields (from criminal justice to fashion merchandising to physician's

See UMES, Page 52

# UMES: Campus undergoes changes

UMES, From Page 51

assistant) and doctoral programs are offered in Educational Leadership, Food Science and Technology, Marine-Estuarine Environmental Sciences, Organizational Leadership, Physical Therapy and Toxicology.

The 766-acre grounds, ranked the second most beautiful campus in the United States by the National Professional Grounds Management Society for two years running, have enjoyed a construction renaissance in recent years. Since 2000, the \$25 million Student Services Center, featuring a movie theater, a six-lane bowling alley, a ballroom and study areas, has opened as has the \$30 million William P. Hytche Athletic Center, with a 5,000 seat arena, a swimming pool, a fitness facility, racquet ball courts and locker-rooms. The \$15 million Food Science and Technology Center opened in fall 2003 and a \$40 million Social Science and Education building opens in spring 2005.

UMES has a profound impact on the regional economy. In addition to the spending power of the institution itself and its students, faculty and staff, fiscal year 2003 saw over \$17 million in grants, contracts and cooperative agreements secured from government agencies, foundations, other universities and the business sector. The UMES Rural Development Center has channeled more than \$50 million into the Lower Eastern Shore over the past five years.

Private giving is also on the upswing, with a record \$2.4 million donated to the University in 2003.

UMES is a cultural hub for Delmarva, offering an array of activities from jazz concerts, to art exhibitions to choir performances, many of them free to the public. WESM (91.3 FM) broadcasts its jazz and news format 24 hours a day.

The University also offers sport enthusiasts the area's only NCAA Division I athletics program, with a dozen men's and women's teams, including basketball. UMES is a member of the Mid-Eastern Athletic Conference.

## TANGIER ISLAND CRUISES ...



from Crisfield, MD

Visit charming & historic Tangier Island!

Departs daily at 12:30 p.m. (May 15 thru Oct. 31)

\$22.00 per person

Tangier Island Cruises • 1001 West Main Street • Crisfield, MD 21817

**KIDS FREE**

While visiting Tangier, you may purchase a delicious family-style lunch at "Hilda Crockett's Chesapeake House"

**410-968-2338**